



METASONIC
business. in tune.



5 SYMBOLS. 1 GOAL: PROCESS-BASED COLLABORATION. SIMPLY DONE WITH S-BPM.

S-BPM stands for “subject-oriented business process management” and is setting new standards in today’s BPM market. This globally unique method was developed by Dr. Albert Fleischmann. It is a BPM revolution with the goal of creating dynamic business applications quickly and easily, integrating them promptly and seamlessly into existing IT systems and executing them within a portal. The result is a process-oriented, agile collaboration thriving on change.

S-BPM focuses on the subjects, i.e. the people who are actively engaged in the process. Without special IT knowledge, the processes can be modeled, their application logic tested interactively, and then executed immediately as a workflow. Based on the process models, the software needed to handle the processes is created automatically.

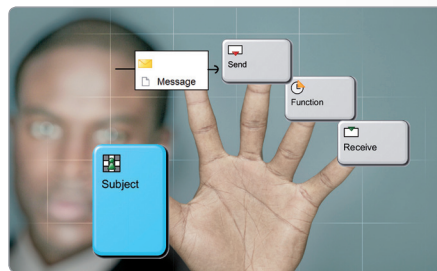
What exactly does “subject-oriented” mean?

Just as in the grammatical context between subject, predicate, and object, the approach here focuses on the behavior of the individual participant in the process (This could be a human being or an EDP system). Metasonic refers to participants exhibiting this behavior pattern within a process as a “subject”. Subjects are active. In drawing parallels to grammar, you can identify a subject in each language that describes the active part of a sentence. By contrast, the object is passive and represents something or someone involved in the subject’s behavior. Back in the world of processes, this could include data or databases.

S-BPM lives communication

This means that S-BPM first of all acknowledges the fact that process participants communicate with each other in order to structure and tune the desired process re-

sults or respectively, to ideally collaborate. In this way a very important aspect of your company’s organizational culture is being addressed. Because processes are a form of organization.



A fine distinction

The key to global competitiveness and agility is speed. S-BPM provides the optimal basis. Using just 5 symbols every business user can create process applications efficiently and cost-effectively in accordance with compliance rules and make changes on the fly – all in the blink of an eye.

ADVANTAGES AT A GLANCE:

- › Employee communications play a pivotal role
- › Creation of complex processes and business applications using only 5 symbols
- › Compliance is built into each process from the very beginning
- › Process logic can be immediately validated interactively and then executed in a process portal
- › Seamless integration in an existing IT landscape
- › Highly motivated employees because they themselves can react quickly and flexibly to changes
- › Ideal collaboration
- › Significant economic benefit:
Let’s assume you save 10 hours per process change and pay an hourly rate of € 100. If you have 1,000 process changes or new process implementations per year, you will save a total of € 1,000,000!



METASONIC
business. in tune.

REVOLUTIONARY APPROACH:

“It’s never been so easy to rapidly create business applications and connect them with each other. Using S-BPM our platform generates transparent and secure processes, which thrive on a dynamic communication flow. As a result, businesses benefit from a goal-oriented efficient collaboration with an optimal time-to-market at reduced costs - the ideal basis for growth and success.”



Herbert Kindermann,
Managing Director,
Metasonic GmbH

Thereby, in the center of attention is the structured communication of all process participants. A single central control flow, a component of many other BPM tools, is not required any more.

The end of shadow IT

Thanks to S-BPM, individual ad-hoc and creative processes can be integrated in the central IT landscape by the employees themselves, even while the process is running, i.e. in real time. A high-risk shadow IT as a result of autonomous behavior can so be avoided. S-BPM relies on a single modeling environment for business as well as for IT and harmonizes their communications with each other. Our approach avoids useless interviews, diverse adjustments, and mistakes which are usually not detected until implementation and initial operation. It motivates all participants to make contributions for process improvements on an ongoing basis, cuts down considerably on cost-intensive changes and helps companies obtain a very high level of agility. This is how we define the future of BPM.

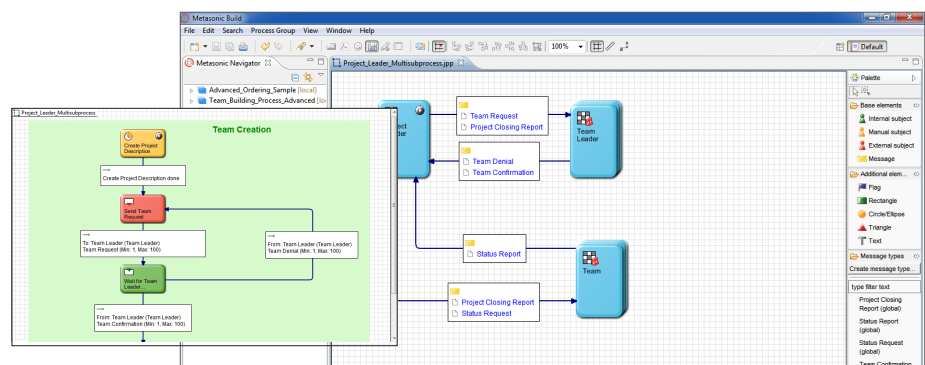
Easing the burden of IT

S-BPM is the cause of a paradigm shift in the world of business processes. Processes do not have to be adapted to IT options

any more. Instead, employees describe from a business point of view who needs to communicate when and with whom, and which services they require to do so. In short: The burden on IT is lightened and more responsibility is given to operational business departments. IT can now concentrate on the seamless provision of IT Infrastructure. S-BPM impresses thereby with its platform-independent integration in real time. This is how you can build on your previous investments.

“Built-in compliance”

All employees, as they perform their daily work, receive support through a personalized process portal which offers built-in compliance in process models from the start. Thus, they will automatically act in conformance with the rules. The S-BPM approach puts this into practice. Metasonic - Business. In Tune.



Only 5 symbols: Process applications created, changed and executed in a portal - all in the blink of an eye.